



Sail Loft Court, Clyde Square, London, E14 7EQ

£350 Per Week

Studio apartment for rent within this beautiful warehouse conversion, part of the Royal Quay development.

Located on the Limehouse Cut Canal, within short walking distance of Canary Wharf and the DLR station.

Top specification throughout, open plan living room with luxury fitted kitchen, solid wood flooring, luxury bathroom suite and fitted bedroom.

Comes furnished. Day concierge.

PROPERTY AVAILABLE FROM 03.07.2026

- Available from 03.07.2026
- Walk to station
- Solid wood floors
- Studio apartment
- Day concierge
- Walk into Canary Wharf
- Warehouse conversion
- Furnished

Sail Loft Court, Clyde Square, London, E14 7EQ



KITCHEN



ROYAL QUAY



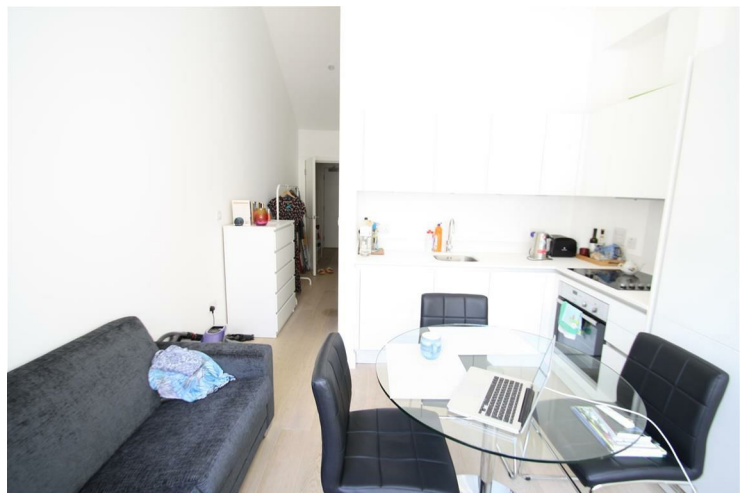
BATHROOM



STUDIO ROOM



ROYAL QUAY

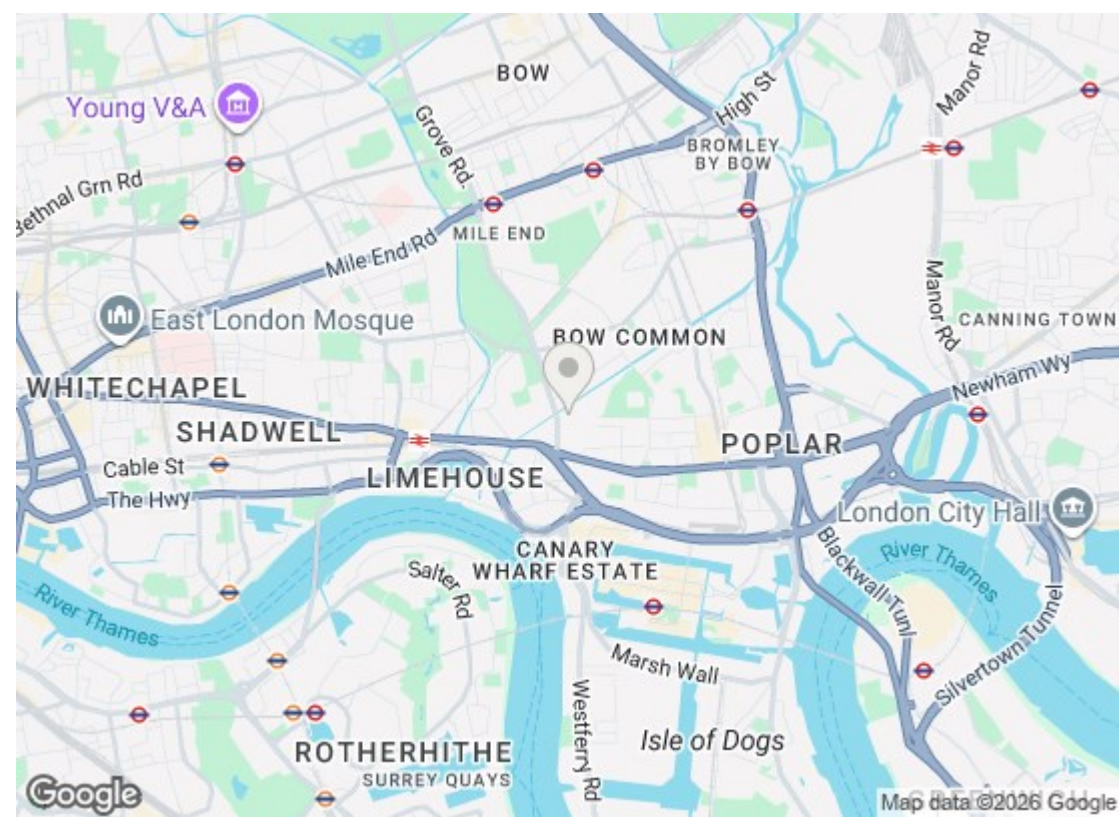


STUDIO ROOM

Sail Loft Court, Clyde Square, London, E14 7EQ



STUDIO ROOM



Energy Efficiency Rating		
	Current	Potential
Very energy efficient - lower running costs		
(92 plus) A		
(81-91) B		
(69-80) C	74	74
(55-68) D		
(39-54) E		
(21-38) F		
(1-20) G		
Not energy efficient - higher running costs		
EU Directive 2002/91/EC		
Environmental Impact (CO ₂) Rating		
	Current	Potential
Very environmentally friendly - lower CO ₂ emissions		
(92 plus) A		
(81-91) B		
(69-80) C		
(55-68) D		
(39-54) E		
(21-38) F		
(1-20) G		
Not environmentally friendly - higher CO ₂ emissions		
EU Directive 2002/91/EC		

We have prepared these property particulars as a general guide to a broad description of the property. They are not intended to constitute part of an offer or contract. We have not carried out a structural survey and the services, appliances and specific fittings have not been tested. All photographs, measurements, floorplans and distances referred to are given as a guide only and should not be relied upon for the purchase of carpets or any other fixtures or fittings. Lease details, service charges and ground rent (where applicable) and council tax are given as a guide only and should be checked and confirmed by your Solicitor prior to exchange of contracts.